



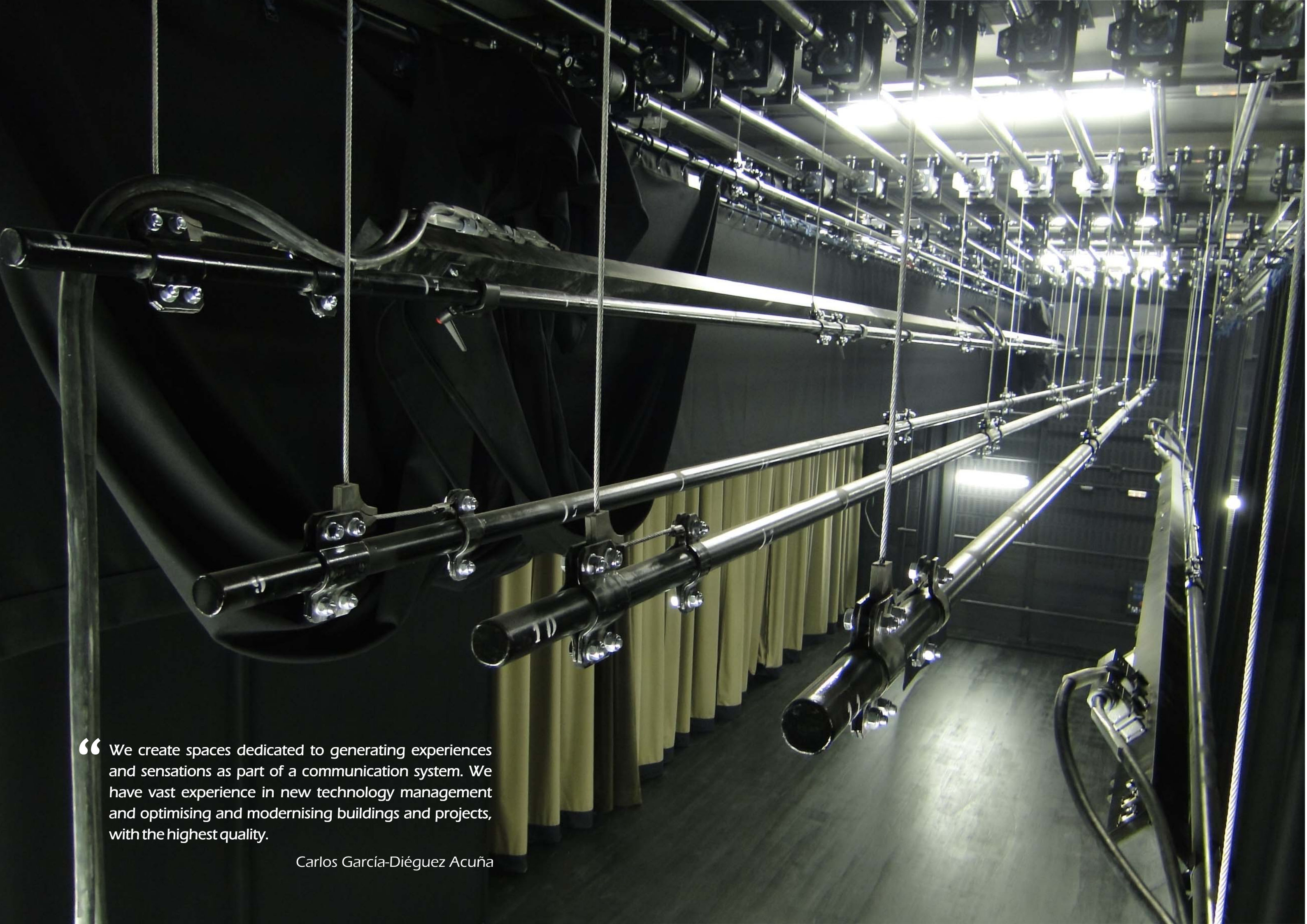
**CONSULTORES
ESCENICOS**

**THEATRE
CONSULTANTS**





La Alhóndiga Cultural Center
(Bilbao)



“ We create spaces dedicated to generating experiences and sensations as part of a communication system. We have vast experience in new technology management and optimising and modernising buildings and projects, with the highest quality.

Carlos García-Diéguez Acuña



1. Introduction

If we look up the word 'consult' in the dictionary, we find that it means "to seek information or advice from someone". Words related to this verb are evidently 'consultancy', "a professional practice that gives professional advice within a particular field" and 'consultant', "the person who provides said professional advice".

Since García Diéguez Consulting S.L. (Stage specialities) was founded, we realised that these definitions were very much attached to their 19th century roots, and being an innovative company, we decided that we would have to broaden their meaning to our way of thinking.

We now like to call our consultancy our 'Virtual Office' and the consultants the 'Multidisciplinary Team'. This would, in turn, mean that our knowledge and techniques are not limited to location or professional discipline, allowing us to allocate the perfect consultant for each consultation, especially because means of communication and transportation are also undergoing constant development.

Given our eagerness and ideology, García Diéguez Consulting embarked its journey with numerous collaborators: technicians, scientific, theoretical and practical specialists, all renown in their subject areas. This therefore allowed us to work in a wide field, delivering reports and providing expert opinions, drafting project designs for stage specialities, with efficiency, speed and an excellent performance.

Our consulting services for preliminary designs, base designs and working projects for different stage specialities are currently most in demand. However, we do also provide services for rehabilitations, restorations, reformations, adaptation and innovation of equipment for performance venues.



Paral·lel Theatre
(Barcelona)

2. Services

Garcia Diéguez Consulting S.L. offers consultancy services, providing solutions for different types of situations that may produce during any given stage of a show or event project: design, equipment, rehabilitation or space management. Our reliability comes from years of experience as a team that works in architecture, engineering and stage techniques, developing solutions that are integrated in multiple projects. We don't only take into account current needs, but those that may occur in the future and work to ensure that any space is used to its full potential.

2.1. STRATEGIC CONSULTING

We believe that strategic consultancy services start at the very first stages of defining and designing a venue for shows and events. We provide an overall view of the whole process, from choosing and contracting the work team, commissioning, programming and space management.

For each project, we work to satisfy our client's needs, conducting analyses and detailed studies that help us organise the tasks to be carried out:

- Use and function programs.
- Needs programs.
- Related concepts and characteristics depending on the space design.
- Market and context. Present and future.
- Technical staff requirements.
- Programming and space management.

2.2. SUPERVISION AND TECHNICAL CONSULTANCY

We provide services for supervising existing stage spaces and equipment. We assess their viability and suitability for their planned use, generating the technical reports and graphic documents deemed necessary.

As such, we assess the space selection processes, teams and equipment for each case, providing all our experience in the sector and conducting relevant analyses of the options, studying the characteristics and affinity with existing models and costs.

2.3. STAGE PROJECTS

We carry out complete designs for stage specialities for spaces and buildings used for shows and events. Our services start at the first stage of the preliminary design and base design, through to the complete definition of the working project and the as-built and final documentation.

Our projects include documents that are common in any architectural or engineering project: Project narratives, technical specifications and conditions, calculations annexes, diagrams, measurements and estimations.

We develop each and every one of the determining aspects of the building design process:

- Design.

We analyse the suitability of the scale, shape and size of the spaces, as well as its planned use, studying each problem associated with the ergonomics of public spaces and the synergy of the functioning of the different areas of space: for the public, artists, technicians, logistics and stock.

- Planning.

We study the building so as to find solutions that provide maximum efficiency. We provide the work team with the necessary guidelines so the different centre areas can be organised in the best way possible, and the space can be optimised when events take place. We create the detailed building documentation and supervise all parties that are involved in the project. Within our multi-disciplinary team we are supported by artists, architects, engineers and designers. From the very start of the constructive process we are able to consider every situation possible, avoiding later difficulties while the works are being carried out.

- Equipment.

Using the Use program, we are able to propose equipment for each of the stage specialities in accordance with the uses and needs required. Every possible interference between different equipment and installations, and technicians that install/use them is analysed and studied. We study the technical alternatives and compare ability and costs.

As such, all of these aspects are reflected in every one of our specialities, and as such, we structure our projects accordingly:

- Stage architecture
- Stage structure
- Stage mechanics
- Stage textiles
- Stage lighting
- Stage sound
- Communications systems
- Projection and Multimedia

2.4. TECHNICAL DESIGN AND STAGE PROPOSALS

Our technical knowledge and experience is used by our team in design, architecture, engineering and scenery art for organisations, events venues, designers and stage companies for installing and assembling stages.

We carry out projects that integrate different sound, lighting, and projection and multimedia systems for stage proposals. We support the stage designers with constructive formalisation of their scenographic projects, supervising technical characteristics such as: structural feasibility, optimisation of transportation and assembly processes, standardisation, ensuring safe use and adaptation of the spaces to different technical and formal dimensions. We give advice on the selection of the equipment and building materials, creating the necessary technical documentation: project narrative, calculations, diagrams and measurements.

When organising shows in locations that are not usually used for this purpose (streets, squares, gardens, monuments, etc.) we define and propose equipment and infrastructure needed for the event's stage, considering aspects related to design, production, construction, logistics, accessibility, crowd control, power supply and safety.

2.5. TECHNICAL SUPPORT FOR THE WORKS AND COMMISSIONING THE INSTALLATIONS

Technical Support of the Works, monitoring the progress and deadlines set out for the project, as well as monitoring quality control. We perform exhaustive monitoring of stage equipment installation as well as those that already existed (extensions, structure, rest of installations, etc.). We supervise from the first stages to ensure that the project develops correctly in the different building spaces, as its formalisation could directly or indirectly affect the equipment or even the event that is to take place.

We consider that commissioning of stage equipment is complicated and important, being an extremely delicate process, meaning that equipment designers are the most suitable professionals to support the team of people that are to finally use the systems.

2.6. SHOW SUPPORT

Support, stage and event management. These services are especially interesting for centres that have previously undergone a stage project, where we monitor shows and first events to support the technicians that will use the installations, showing them methods and procedures and the best way to handle equipment, depending on how it was installed.

2.7. TECHNICAL TRAINING

Informative and training sessions on the building and its equipment's functioning are essential. We therefore provide technical, general and monographic seminars to staff, informing them of correct usage, functioning and optimal working methods during events.

2.8. TURNKEY PROJECTS

Our company has the human and material resources and the management capacity needed to offer our clients fully completed and functioning projects and products. Not only do they include the technical means (materials and installations), but also the human resources (specialised technical staff) and all of the administrative tasks and supplies (including imports).

Support for the shows mentioned in point 2.6 is also included for the Turnkey projects.



Beiramar Convention Centre
(Vigo)

3. Staff

Dr. Rafael García Diéguez



Founding partner of García Diéguez Consulting.

Project Director and Architecture Coordinator.

Cinema Decorator "Institute of Cinematographic Research and Experiments, Madrid".

Qualified in "Set Design and Cinematography" (1957) PhD in Architecture.

Senior Architect named by the Escuela Superior de Arquitectura, Madrid (1964).

Professor at the Escuela Técnica Superior de Arquitectura, Seville.

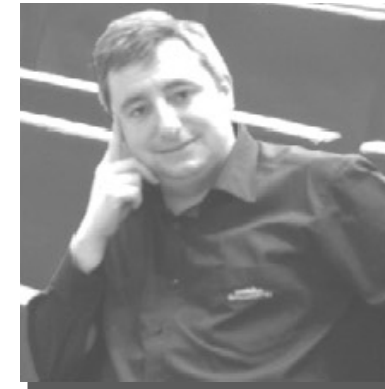
Director of the Department of Architectonic Constructions and Emeritus Honorary Professor at the University of Seville.

Lecturer on Doctorate Course: "Problems with Shape in Performance Spaces".

Extensive professional experience since 1964, mainly on residential works, having carried out Projects and Works Management.

Vast experience in the Performance and Show sector, working on new-builds, restoration and reforms projects.

Carlos García-Diéguez Acuña



Founding partner of García Diéguez Consulting.

Project Director and Coordinator of Stage Specialities.

Specialist in electro-acoustic systems.

Technical director at FactorQ film studios.

Technical Director of the companies Apogee Servicios and Telecomunicaciones S.A., companies linked to the multinational SIEMENS. Companies dedicated to sound and lighting throughout Europe and the Middle East. Engineering design works and executive production of tours.

Maintenance Director at Camoes Theatre for the state-run company EXPO 98, during the EXPO period, contracted as a civil servant for the Portuguese government.

Operation manager: at Camoes theatre for the state-run company PARQUE DE LAS NACIONES during the post-Expo period.

Technical Director of the EL PALENQUE performance area in collaboration with AGESA, state-run company, managing the former EXPO 92 installations.

Project Director and manager of lighting systems (dimmers) and Ethernet lighting control with companies STONEX and ETC. Audio installation in show areas.

Installations manager for assembling and commissioning lighting systems (dimmers) and lighting control with the ThyssenKrupp-STONEX Joint Venture in the "BALUARTE" Conference Centre and Auditorium in Pamplona, Navarra.

Jaime Aranda Serralbo



Senior Architect, specialist in Architectural Heritage from the University of Seville and Politecnico di Milano. Experience in Museography and Stage Design.

Masters in Performing Arts Studies. Masters in Business Administration.

Expert in Planning Performance Spaces and Mechanical Structures.

Responsible for the management of project teams, coordination of works and communication with collaborating and external teams.

Responsible for project planning, supervising phase progress and integrating Stage Specialities with the architectonic project.

Raúl Benítez Ogállar



Architect specialising in occupational risk prevention, work safety, ergonomics and industrial psychosociology and safety.

He is currently preparing his PMP certificate from the Project Management Institute.

Coordinator of Stage Mechanics and Machinery projects, from the start of the project, during the planning, design and operation phases, until the project closure phase.

His training and experience allows him to identify the needs proposed by the client and integrate them with different members of the project team.

Ángel Luis de la Feria Waflar



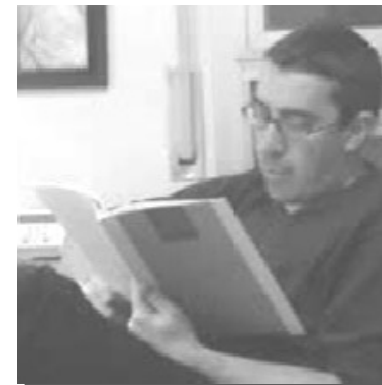
Architect specialising in stage installations, lighting and audiovisuals.

Architect with Erasmus Mundus Masters in Surveying and Repairing Buildings, specialising in Auditing and Energy Efficiency in rehabilitation, installation and structural calculations.

Vast experience in projects for Museum, Cultural and Sport Spaces.

Project Coordinator for Stage Installations, responsible for managing the integration of installation projects, conducting lighting and energy-saving studies and installation and structural calculations.

Dr. Juan Carlos Gómez de Cózar



PhD in Architecture from the Escuela Superior de Arquitectura, Seville. Specialist in structures. Professor at the Department of Architectonic Construction at the University of Seville.

Freelance architect and consultant.

He has worked on more than 40 projects, acting as a consultant in designing, calculating structures and foundations in building works, having an influence on their structural design.

He has created calculation programs for generating or analysing different structural types of mechanical behaviour.

Dr. Jaime Navarro Casas



Responsible for Architectural Acoustics studies. PhD in Architecture and exdirector of Escuela Superior de Arquitectura in Seville.

He has participated in numerous acoustic projects applied to theatres, auditoriums and their needs for rehabilitation.

He was the director of the Andalusian Government's research project to analyse the acoustics of the theatre network.

He collaborated on the research project that established the determining acoustic quality parameters in newly-built and renovated concert halls.

Salvatore Monda



Engineering technician in Computing Systems, specialising in Physical Systems from the University of Seville.

Specialising in Audiovisual Equipment, Telecommunications and Motorisation control.

Director of the technical department in Apogee Telecomunicaciones, supervising and carrying out maintenance work on electronic equipment.

Engineering and producing products that he designed.

Antonio Regalado Fernández

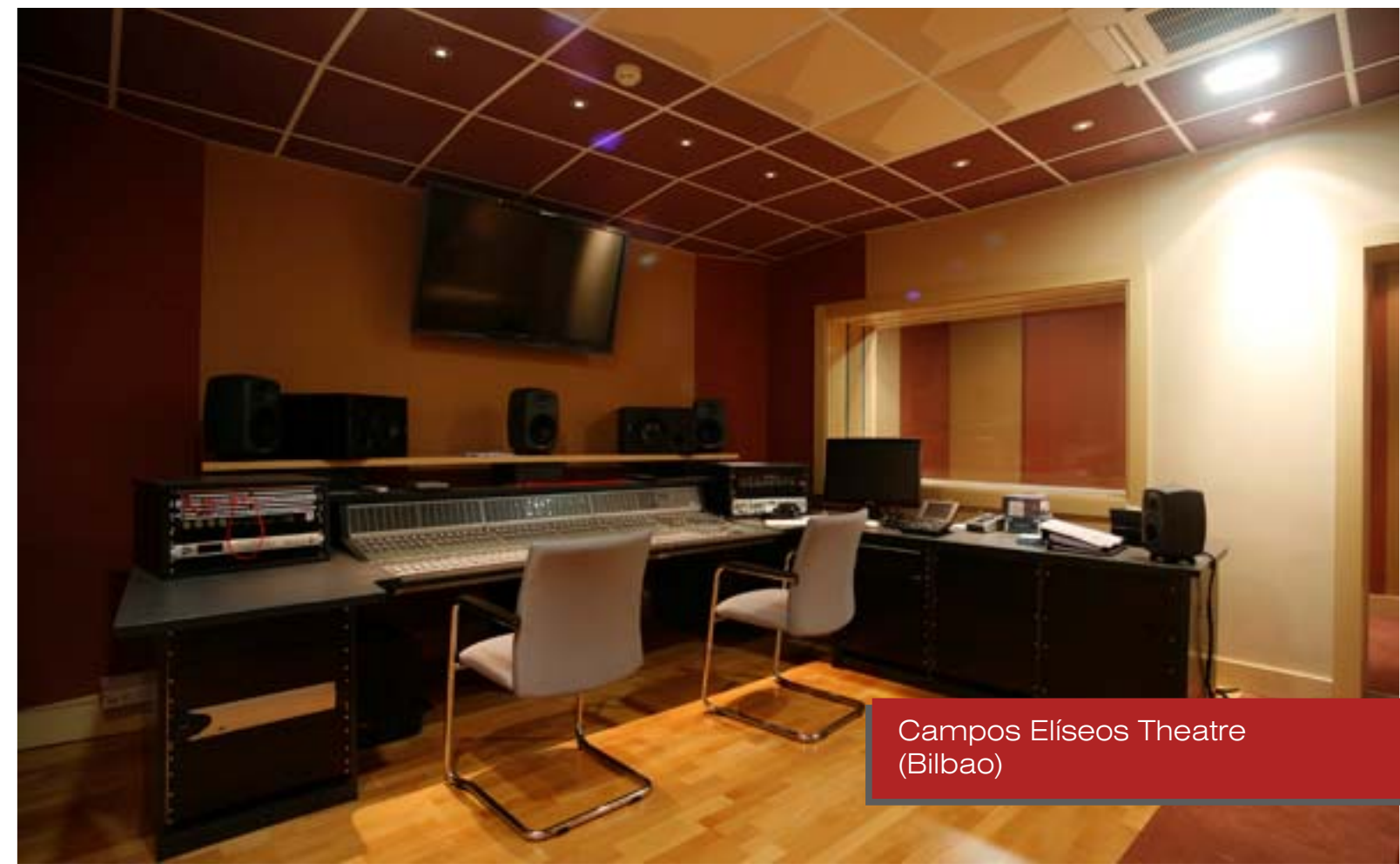


Specialist in Design and assembling Stage Lighting.

Vast experience in different activities carried out at a technical level and Lighting for travelling theatre companies.

Experience in theatrical productions. Management of the sound and lighting equipment for shows on tour and technical assistance for theatrical companies on tour throughout Spain.

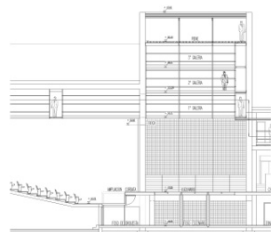
Participating in Jazz, Rock, music and dance festivals, working directly with internationally-recognised artists and companies.



Campos Elíseos Theatre
(Bilbao)

4. Proyectos recientes

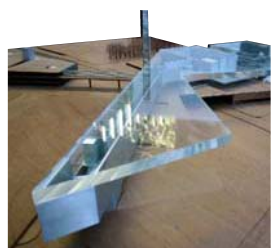
2004



MUNICIPAL AUDITORIUM
Castilleja de la Cuesta SEVILLE

ARCHITECTURAL CONSULTING AND STAGE TECHNIQUES.

Architect: Manuel Gómez-Millán Vera.



CONVENTION AND EXHIBITION CENTRE
FIBES SEVILLE

Architectural consulting, stage techniques, stage lighting, audiovisuals, communications and broadcasting

AYESA (Aguas y Estructuras S.A.)

José A. García Bermudo.

Architect: Guillermo Vázquez Consuegra.



CAMPOS ELÍSEOS THEATRE
Sociedad General de Autores y Editores SGAE
BILBAO

ARCHITECTURAL CONSULTING AND STAGE TECHNIQUES.

Architect: Santiago Fajardo Cabeza.



VILA DE MIRA DE AIRE CINEMA/THEATRE
Porto de Mós PORTUGAL

TENDER FOR STUDY PRIOR TO ARCHITECTURAL DESIGN.

Architect: Rafael García Diéguez.

2005



AL-ANDALUS TECHNOLOGICAL RESEARCH
CENTRE OF ENTERTAINMENT
Sociedad General de Autores y Editores SGAE
SEVILLA

ARCHITECTURAL CONSULTING AND STAGE TECHNIQUES.

Architect: Santiago Fajardo

2005



EVORA THEATRE
Evora PORTUGAL

ARCHITECTURAL CONSULTING AND STAGE TECHNIQUES.

Architect: Paulo Gama



BENALMÁDENA AUDITORIUM
Benalmádena MÁLAGA

ACOUSTIC STUDY AND CONSULTING.

AUDITORIUM DESIGN. BASIC STAGE CONSULTING.

Architect: José Seguí Asociados S.L.



CULTURAL EQUIPMENT
Solar de Caballería BURGOS

STAGE EQUIPMENT STUDY.

TECHNICAL REPORT FOR IDOM.

Architect: Juan Navarro Baldeweg.

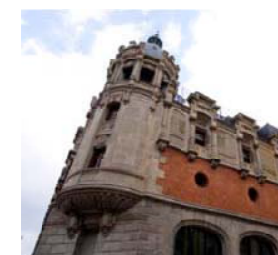


CULTURAL AND COMMERCIAL CENTRE
Manzana del Revellín CEUTA

CONSULTING STAGE TECHNIQUES.

PROJECT IN COLLABORATION WITH ARSUNA LTDA.

Architect: Álvaro Siza



LA ALHÓNDIGA CULTURAL CENTRE
Ría de Bilbao 2000 BILBAO

CONSULTING STAGE TECHNIQUES.

Designer Starck Network (Philippe STARCK)

Architect: Joint Venture MECSA/ARUP

2005



ECHEGARAY THEATRE MÁLAGA

ARCHITECTURAL CONSULTING AND STAGE TECHNIQUES.

CONSTRUCCIONES VERA.



BUILDING FOR THEATRE, MUNICIPAL POLICE, COURTS AND TRAINING CENTRE Umbrete SEVILLA

DESIGN AND FINANCIAL TENDERS.

Architect: Rafael García Diéguez
Raúl Rodríguez Martínez



HERITAGE CENTRE ALMERÍA

CONSULTING FOR LIGHTING. MUSEOLOGICAL DESIGN.

Architect: Javier García-Diéguez López.



CALDERÓN THEATRE Alcoy ALICANTE

DESIGN AND FINANCIAL TENDERS.
CONSULTING AND TECHNICAL SUPPORT.

Architect: Rafael García Diéguez

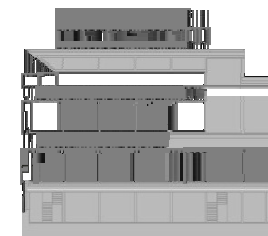


LEAL THEATRE San Cristóbal de la Laguna TENERIFE

TENDER. TECHNICAL DESIGN.
STAGE EQUIPMENT.

Architect: Rafael García Diéguez

2005



AYAMONTE CONVENTION CENTRE HUELVA

REPORT FOR SUPERVISION AND TECHNICAL SUPPORT
FOR THE WORKS COLLABORATION WITH AYESA.

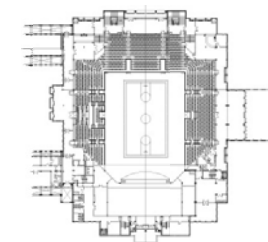
Architect: Miguel A. Francisco Santos
María González García
Juan José López de la Cruz



AUDITORIUM DE VILLAQUILAMBRE Villaquilambre LEÓN

TENDER FOR AUDITORIUM DESIGN CONTRACT.

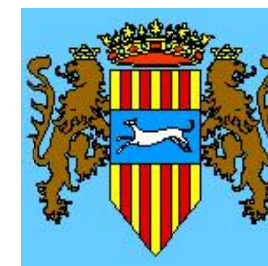
Architect: Rafael García Diéguez



BUILDING FOR MULTIPLE USES University of Oman OMAN

ARCHITECTURAL CONSULTING AND STAGE TECHNIQUES.

SPECTATEC.



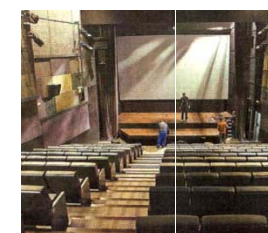
AUDITORIUM THEATRE Cambrils town hall Cambrils TARRAGONA

DESIGN AND FINANCIAL TENDERS FOR THEATRE DESIGN.

SPECTATEC.

Architect: Rafael García Diéguez.

2006



SALA BERLANGA (FORMERLY CINE CALIFORNIA) Iberautor (Grupo SGAE) MADRID

BASE DESIGN AND WORKS MANAGEMENT FOR STAGE SPECIALITIES.

Architect: Santiago Fajardo Cabeza

2006



NORTHEAST SGAE HEADQUARTERS
Sociedad General de Autores y Editores SGAE
SANTIAGO DE COMPOSTELA

ARCHITECTURAL CONSULTING AND STAGE TECHNIQUES.

Architect: Antón García Abril



AUDITORIO-PAZO DE CONGRESOS BEIRAMAR
Sociedad Auditorio-Palacio de Congresos de Vigo
VIGO

ARCHITECTURAL CONSULTING AND STAGE TECHNIQUES.

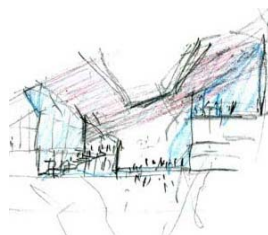
Architect: César Portela



PARAL.LEL THEATRE
Barcelona city council
Iberautor (Grupo SGAE)

ARCHITECTURAL CONSULTING AND STAGE TECHNIQUES.

Projector: Grupo Interdec. Interiorisme.



AUDITORIUM FACTORÍA DE LAS ARTES
Tomares town council
SEVILLE

ARCHITECTURAL CONSULTING AND STAGE TECHNIQUES.

Architect: Guillermo Vázquez Consuegra

2007



KURSAAL NATIONAL THEATRE
Melilla Autonomous City
MELILLA

EXTENSION, REMODELLING AND RESTORATION DESIGN.

Architect: Rafael García Diéguez.

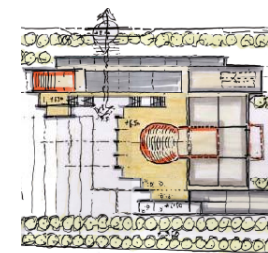
2007



CENTRO DE CREACIÓN DE LAS ARTES (CREAA) (ARTS CREATION CENTRE)
Alcorcón MADRID

TECHNICAL SUPPORT IN STAGE SPECIALITIES.

Architect: Javier Camacho
Pedro Bustamante



MUSIC AUDITORIUM
Málaga city council
MÁLAGA

DESIGN AND FINANCIAL TENDERS FOR AUDITORIUM DESIGN.

Architect: Richard Rogers // José Seguí

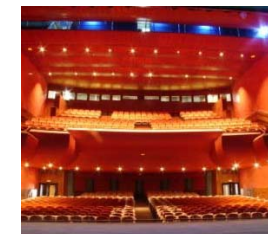


MUSIC, CONVENTION AND EXHIBITION CENTRE
Sociedad Municipal Ensanche 21
Vitoria-Gasteiz ÁLAVA

DESIGN AND FINANCIAL TENDERS FOR AUDITORIUM DESIGN.

UTE Seguí Arquitectos // Indotec Ingeniería

2008



GAZTAMBIDE THEATRE
Tudela town council
Tudela NAVARRA

TENDER FOR SUPPORT FOR DESIGN DRAFTING FOR THEATRE STAGE EQUIPMENT.

Architect: Rafael García Diéguez.



PAVILION FOR MULTIPLE USES
Pamplona NAVARRA

DESIGN AND FINANCIAL TENDERS FOR PAVILION DESIGN.

Architect: Antonio Vaillo et Daniel & Juan Luis Irigay

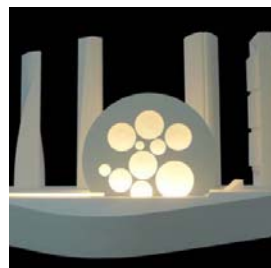
2009



CERVANTES THEATRE
Iberautor (Grupo SGAE)
Mexico Federal District

ARCHITECTURAL CONSULTING AND STAGE TECHNIQUES.

Architect: Antón García-Abril



INTERNATIONAL CONVENTION CENTRE - CITY OF MADRID
Madrid Espacios y Congresos
MADRID

TENDER WITH IDOM FOR CONSULTANCY AND SUPPORT
IN DESIGN FOR STAGE EQUIPMENT.

Architect: Mansilla+Tuñón+Peralta

2010



LARGE STAGE SPACE, GRANADA
Junta de Andalucía (Andalusian regional government)
GRANADA

ARCHITECTURAL CONSULTING AND STAGE TECHNIQUES.

Architect: Kengo Kuma & Associates
AH Asociados



NUEVO GETXO ANTZOKIA
Getxo city council
GETXO (BIZKAIA)

ARCHITECTURAL CONSULTING AND STAGE TECHNIQUES.

Architect: Luis María Uriarte



PELLEGRINI THEATRE
Sociedad General de Autores y Editores SGAE
BUENOS AIRES (ARGENTINA)

ARCHITECTURAL CONSULTING AND STAGE TECHNIQUES.

Architect: Santiago Fajardo Cabeza

2010



COLISEUM THEATRE MADRID
Sociedad General de Autores y Editores SGAE
MADRID

ARCHITECTURAL CONSULTING AND STAGE TECHNIQUES.
STAGE EQUIPMENT.



CAIXAFORUM SEVILLA
Fundación la Caixa / Obra Social la Caixa
SEVILLE

ARCHITECTURAL CONSULTING AND STAGE TECHNIQUES.

Architect: Guillermo Vázquez Consuegra

2012



DHUB: DISENNY HUB
BARCELONA

STAGE TECHNIQUES.

Architect: Oriol Bohigas



BUSAN OPERA HOUSE
BUSAN. COREA DEL SUR

TENDER FOR SUPPORT FOR DESIGN DRAFTING FOR
THEATRE STAGE EQUIPMENT.

Architect: Zarhy Architects + StudioPEZ



CONVENTION AND EXHIBITION CENTRE
FIBES SEVILLE

TECNICAL DIRECTION OF THE AUDITORIUM.

Architect: Guillermo Vázquez Consuegra

“ Our main objective is to develop stage equipment projects through our consultants' transparency and a close rapport with our clients. We provide continuous studio-based assistance and in-depth project knowledge. Our reason for being is ensuring that each project is carried out with success.

Dr. Rafael García Diéguez





Avenue Reina Mercedes 33 1ºA 41012 Seville (Spain)
T. +34 954 61 11 26 F. +34 954 23 77 47 proyectos@gdconsulting.es